

—

AR

TE

LIN

EA

PL

US

—



Un linguaggio diverso  
è una diversa visione della vita.

A different language  
is a different vision of life.

FEDERICO FELLINI

**ARTELINEA**

FIRENZE 1962

# 1

---

INCANTO

4

# 2

---

KIMONO

20

# 3

---

ATOLLO

30

# 4

---

MONOLITEPIÙ

44

# 5

---

DECOR

58

6

---

BOLLA  
62

7

---

FRAME  
78

8

---

REGOLO  
92

9

---

DOMINO LEGNO  
104

10

---

ZEN  
114


11

---

MIRRORS  
120

DESIGN Anita Brotto

1  
—  
IN  
CAN  
TO  
—

A woman with long brown hair, wearing a light blue and white striped tank top and light blue leggings, is sitting on a white stool. She is looking towards a modern white vanity unit. The vanity unit features a large, clear glass bowl sink on a white countertop. Above the sink is a white urinal mounted on a chrome stand. The vanity unit has two white cabinet doors below the countertop. The background is a light-colored brick wall.

Il vetro come filosofia.  
L'eleganza come missione.  
Glass as a philosophy.  
Elegance as a mission.

**COMPOSITION**  
AL535

**INCANTO**  
**TOP & BASINTOP**  
OPALITE BIANCO 20

**CABINET COVERING**  
FRASSINO "COTONE"

**MIRROR**  
INCANTO COLLECTION









---

La parte e il tutto,  
i particolari e il  
progetto, sapienza  
tecnica addolcita  
dalla poesia.

The element and  
the whole, the  
details and the  
project, the technical  
expertise softened  
by the poetry.

---





**COMPOSITION**

AL536

**INCANTO**

**TOP & BASINTOP**

OPALITE BIANCO 20

**CABINET COVERING**

FRASSINO "COTONE" +  
CRISTALLO DECORATO

**MIRROR**

INCANTO COLLECTION









**COMPOSITION**

AL537

**INCANTO**

**TOP & BASINTOP**

AVANA 45

**CABINET COVERING**

FRASSINO "CANAPA" +  
AVANA SILK 05

**MIRROR**

INCANTO COLLECTION







NOCE CANALETTO

FRASSINO "COTONE"

FRASSINO "CHINA"

FRASSINO "CANAPA"



---

Less is more  
ovvero piccoli gesti  
per uno scrigno.

Less is more  
creating small  
gestures for  
a treasure chest.

---



**COMPOSITION**

AL537 B

**INCANTO**

**TOP & BASINTOP**

OPALITE BIANCO 20

**CABINET COVERING**

NOCE CANALETTO + NOCE 41

**MIRROR**

INCANTO COLLECTION





DESIGN Anita Brotto

2



KIM

O

NO



A woman with long blonde hair in a ponytail, wearing a white sleeveless top, is smiling and looking back over her shoulder. She is standing in a shower area with a wooden shelving unit containing various bottles of toiletries. Her hands are resting on the shelves.

Cura dei dettagli, qualità dei materiali, valore delle finiture, design oltre le mode.

The study of detail, versatility and high quality materials, the benefit of the handles, design beyond fashion.

**COMPOSITION**

AL538

**KIMONO**

**TOP & BASINTOP**

SEPPIA 60

**CABINET COVERING**

SEPPIA 60

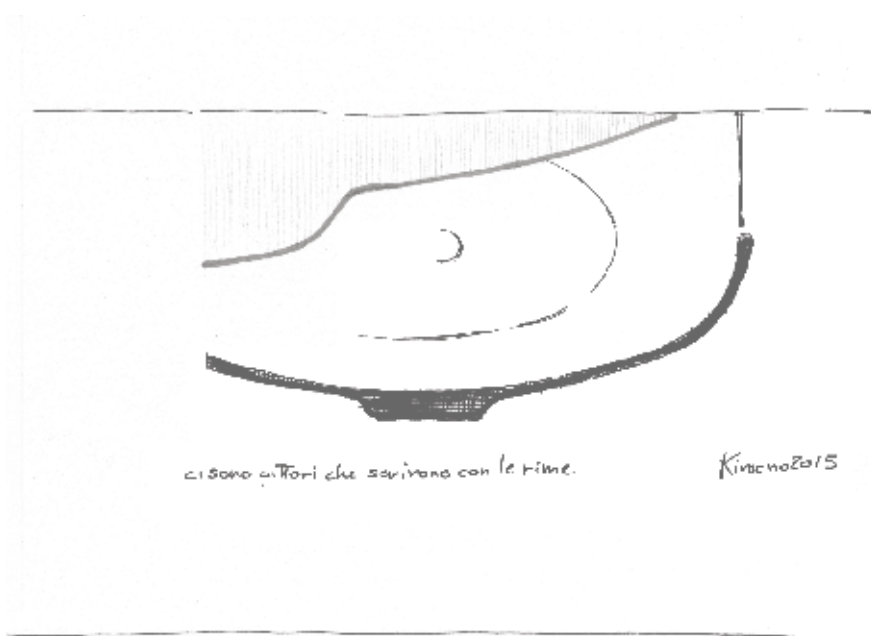
**MIRROR**

LASER COLLECTION









---

La forma “a tutto tondo” del vetro plasmato è chiave di lettura di Kimono.

The “All Round” form of shaped glass with a unique, personal curve is the right interpretation of Kimono.

---







**COMPOSITION**  
AL539

**KIMONO**  
**TOP & BASINTOP**  
OPALITE BIANCO 20

**CABINET COVERING**  
BIANCO ASSOLUTO 30

**MIRROR**  
INCANTO COLLECTION







3



A

T O

L L

O



DESIGN Anita Brotto





*Il disegno razionale e rigoroso si ammorbidisce nella materia plasmata.*

*The functional and rigorous design becomes softer due to the use of shaped materials.*







**COMPOSITION**  
AL540

**ATOLLO**  
**TOP & BASINTOP**  
OPALITE BIANCO 20

**CABINET COVERING**  
WENGÉ + BIANCO

**MIRROR**  
ATOLLO COLLECTION





**COMPOSITION**

AL540B

**ATOLLO**

**TOP & BASINTOP**

OPALITE BIANCO 20

**CABINET COVERING**

BIANCO

**MIRROR**

ATOLLO COLLECTION



**COMPOSITION**  
AL541  
**ATOLLO + VERO**  
**TOP & BASINTOP**  
OPALITE BIANCO 20  
**CABINET COVERING**  
BIANCO  
**MIRROR**  
ATOLLO COLLECTION









---

La tradizione del  
lavabo a mensola  
riscritta in Opalite.

The traditional  
basin shelf, renamed  
in Opalite.

---



**COMPOSITION**  
AL542

**ATOLLO**  
**TOP & BASINTOP**  
OPALITE BIANCO 20

**CABINET COVERING**  
WENGÈ

**MIRROR**  
ATOLLO COLLECTION



**COMPOSITION**

AL543

**ATOLLO**

**TOP & BASINTOP**

OPALITE BIANCO 20

**CABINET COVERING**

WENGÉ

**MIRROR**

ATOLLO COLLECTION





6

8

12

1

4



MO  
NO  
LI  
TE  
PIU



L'essenzialità del design  
sposa il decoro.

Essential design enriched by  
elegant patterns.







**COMPOSITION**  
AL544

**MONOLITEPIÙ**  
**TOP & BASINTOP**  
OPALITE BIANCO 20

**CABINET COVERING**  
"TIPOGRAFICO" BIANCO  
ASSOLUTO 30 / SEPPIA 60

**MIRROR**  
LASER COLLECTION





**COMPOSITION**

AL545

**MONOLITEPIÙ**

**TOP & BASINTOP**

OPALITE BIANCO 20

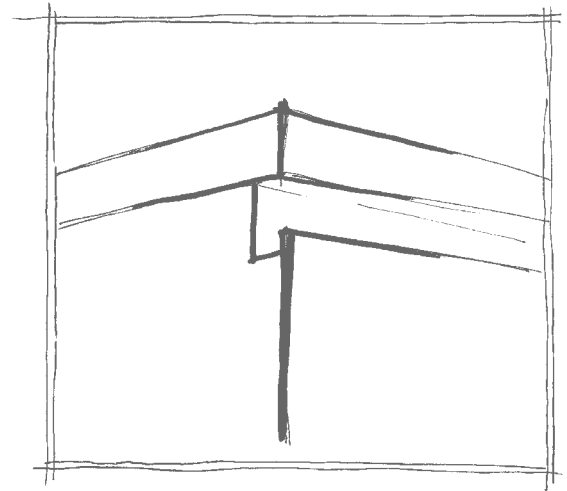
**CABINET COVERING**

"PAPAVERO"

BIANCO ASSOLUTO 30 / SEPIA 60

**MIRROR**

LASER COLLECTION



**COMPOSITION**

AL545B

**MONOLITEPIÙ**

**TOP & BASINTOP**

OPALITE BIANCO 20

**CABINET COVERING**

"TIPOGRAFICO"

SEPPIA 60 / SPECCHIO

**MIRROR**

LASER COLLECTION





**COMPOSITION**  
AL546  
**MONOLITEPIÙ**  
**TOP & BASINTOP**  
OPALITE BIANCO 20  
**CABINET COVERING**  
"PAPAVERO"  
SEPPIA 60 / SPECCHIO  
**MIRROR**  
LASER COLLECTION









**COMPOSITION**  
AL547

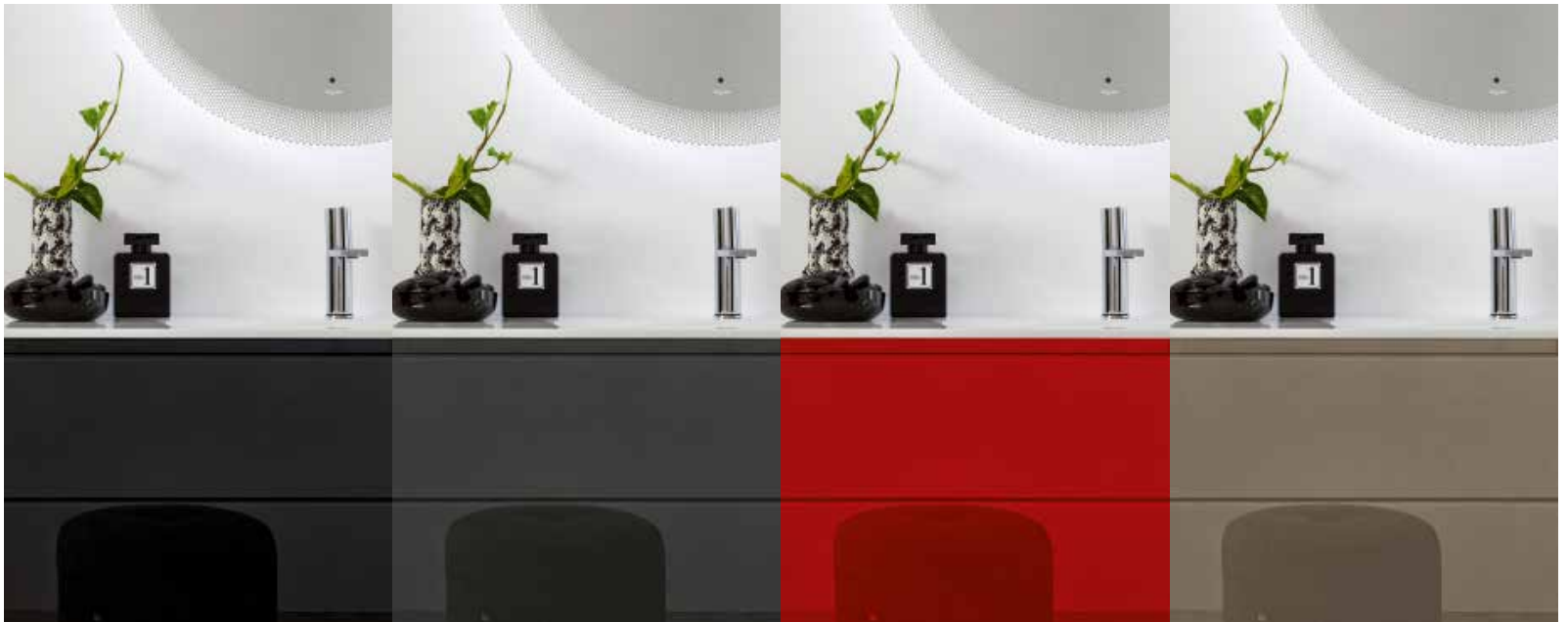
**MONOLITEPIÙ**  
**TOP & BASINTOP**  
OPALITE BIANCO

**20 CABINET COVERING**  
"PAPAVERO"  
SEPPIA 60 / SPECCHIO

**MIRROR**  
LASER COLLECTION







SEPPIA 60

FUMO 11

MELOGRANO 23

AVANA 45

MonolitePiù: nuove finiture, nuovi decori,  
nuova tecnologia.

MonolitePiù: new finishes, new patterns,  
new technology

DESIGN Anita Brotto

5



DE  
COR





Oggetto prezioso, ricco, personalizzabile  
e sempre elegante.

A precious object, rich, customized and  
always elegant.

**COMPOSITION**

AL332B

**DECOR**

**TOP & BASINTOP**

OPALITE NERO 24

**CABINET COVERING**

SEPPIA 60

**MIRROR**

LED COLLECTION

**FLOORING COVERING**

OPALITE 20 +

OPALITE NERO 24





DESIGN Anita Brotto

6



BO

LL

A







*Gioco delle trasparenze e  
della leggerezza.*

*Transparency and lightness  
effects.*





**COMPOSITION**  
AL548

**BOLLA + INFRA**  
**TOP & BASINTOP**  
OPALITE BIANCO 20

**CABINET COVERING**  
BIANCO ASSOLUTO 30

**MIRROR**  
OBLÒ COLLECTION





**COMPOSITION**  
AL549

**BOLLA**  
**TOP & BASINTOP**  
OPALITE BIANCO 20

**CABINET COVERING**  
BIANCO ASSOLUTO 30

**MIRROR**  
BROADWAY COLLECTION





Il vetro nella  
sua massima  
espressione:  
forma e trasparenza.

Glass in its highest  
expression: shape  
and transparency.







**COMPOSITION**  
AL550B  
**BOLLA**  
**TOP & BASINTOP**  
OPALITE BIANCO 20  
**MIRROR**  
BOX COLLECTION

**COMPOSITION**  
AL550  
**BOLLA**  
**TOP & BASINTOP**  
OPALITE BIANCO 20  
**MIRROR**  
LASER COLLECTION





**COMPOSITION**  
AL551  
**BOLLA**  
**TOP & BASINTOP**  
OPALITE BIANCO 20  
**MIRROR**  
BARCODE COLLECTION

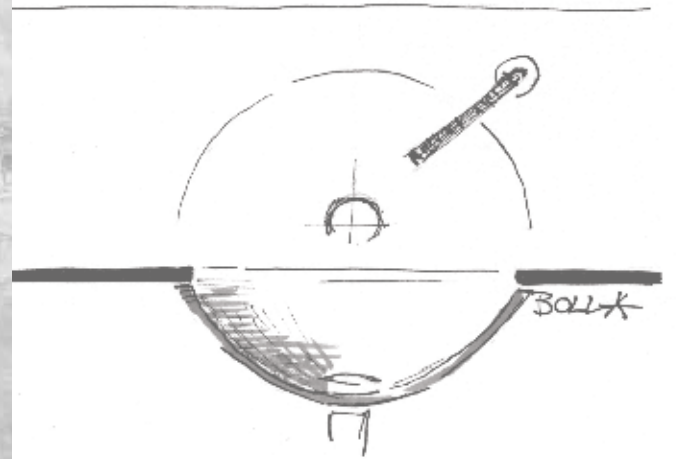






I complementi arricchiscono e completano i programmi Artelinea.

The complements enrich and complete the programs available from Artelinea.





DESIGN Tommaso Nani  
Noa Ikeuchi

7



FRA

ME







*Il gesto calibrato si traduce in eleganza.  
The calibrated gesture becomes elegance.*





**COMPOSITION**

AL552

**FRAME**

**TOP & BASINTOP**

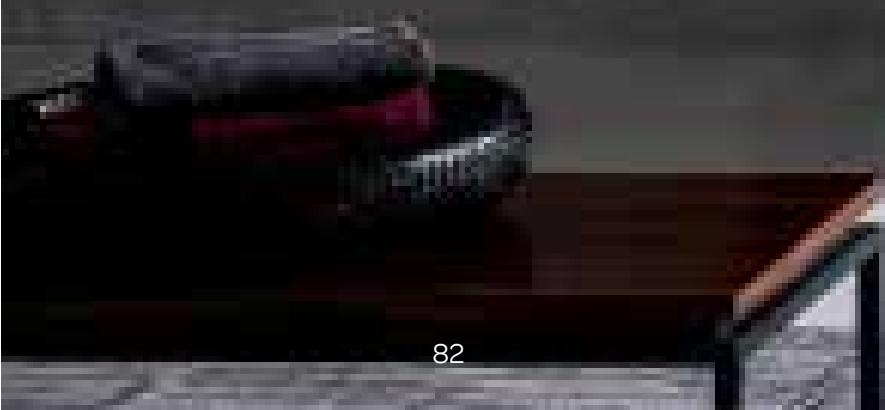
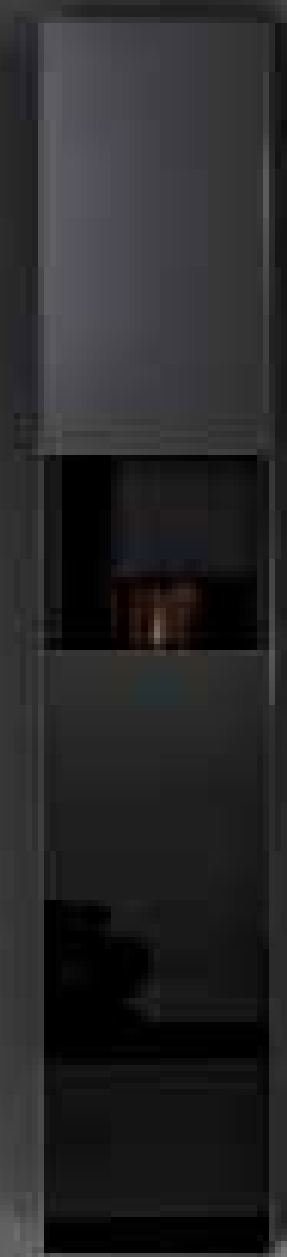
OPALITE BIANCO 20

**CABINET COVERING**

SEPPIA 60

**MIRROR**

LUMINEE COLLECTION





**COMPOSITION**  
AL553

**FRAME**  
**TOP & BASINTOP**  
OPALITE NERO 24

**MIRROR**  
BOX COLLECTION





I dettagli curati descrivono la passione per il prodotto, la ricerca del bello.

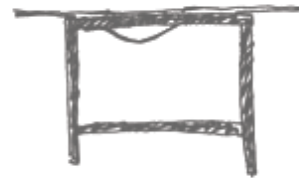
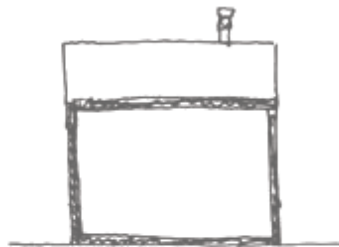
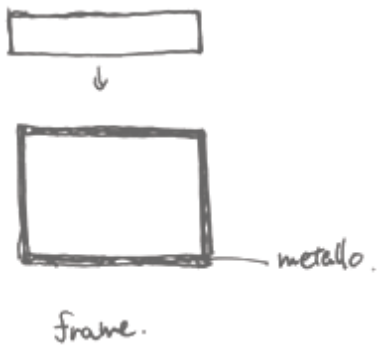
The well-finished details describe the passion of the product and the search for beauty.

---

Specchi e  
illuminazione:  
Artelinea  
caratterizza  
l'ambiente.

Mirrors  
and lighting:  
Artelinea  
enriching the  
environment.

---







**COMPOSITION**

AL554

**FRAME**

**TOP & BASINTOP**

OPALITE BIANCO 20

**CABINET COVERING**

SEPPIA 60

**MIRROR**

MOVE COLLECTION





Con accessori che disegnano lo spazio,  
Frame diventa programma completo.

With accessories that draw the space,  
Frame becomes a complete plan.





8



RE  
GO  
LO





Libertà espressiva e progettuale coniugata  
ad un disegno elegante, di carattere, prezioso.

Freedom in design and planning joined by  
the use of elegant and precious materials, thus  
creating a product with great character.

**COMPOSITION**

AL555

**REGOLO**

**TOP & BASINTOP**

OPALITE BIANCO 20

**CABINET COVERING**

BIANCO ASSOLUTO 30

**MIRROR**

LASER COLLECTION









---

Nuovo concept,  
nuove funzioni,  
nuovi dettagli.

New concept,  
new functionality,  
new details.

---





**COMPOSITION**

AL556

**REGOLO**

**TOP & BASINTOP**

OPALITE BIANCO 20

**CABINET COVERING**

BIANCO ASSOLUTO 30

**MIRROR**

LED COLLECTION



---

**Opalite bianca e nera** by Artelina: un materiale per il design.

**Opalite bianca and nero** by Artelina: a material from and to design.

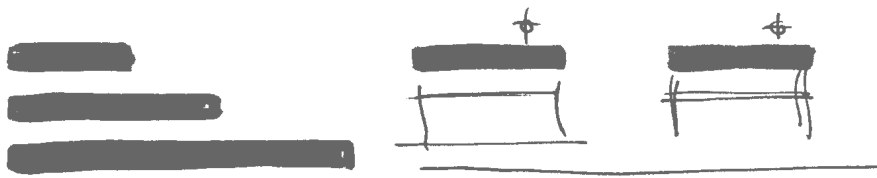
---

**COMPOSITION**  
AL557

**REGOLO + FRAMMENTO**  
**TOP & BASINTOP**  
OPALITE NERO 24

**CABINET COVERING**  
SEPPIA 60

**MIRROR**  
FLASH COLLECTION





**COMPOSITION**  
AL558  
**REGOLO + VERO**  
**TOP & BASINTOP**  
OPALITE NERO 24  
**CABINET COVERING**  
BIANCO ASSOLUTO 30  
**MIRROR**  
LASER COLLECTION







9

---

DESIGN Anita Brotto

DO

MI

NO

LEG

NO

---



*Il Monoblocco versatile sposa il legno.  
The versatile vanity unit that embraces wood.*



**COMPOSITION**  
AL559

**DOMINO LEGNO**  
**TOP & BASINTOP**  
OPALITE BIANCO 20

**CABINET COVERING**  
NATURAL +  
BIANCO ASSOLUTO 30

**MIRROR**  
LED COLLECTION





Nuove essenze arricchiscono il programma Domino.

New materials enrich the Domino style.











**COMPOSITION**  
AL560

**DOMINOLEGNO**  
**TOP & BASINTOP**  
OPALITE BIANCO 20

**CABINET COVERING**  
NATURAL

**MIRROR**  
LED COLLECTION





10



Z E

N

Nella semplicità del disegno la risposta  
alle richieste più “estreme”.

In the design simplicity the answer  
to the request more “extreme”





**COMPOSITION**  
AL561

**ZEN**  
**TOP & BASINTOP**  
OPALITE BIANCO 20

**CABINET COVERING**  
SEPPIA,60

**MIRROR**  
ZEN COLLECTION

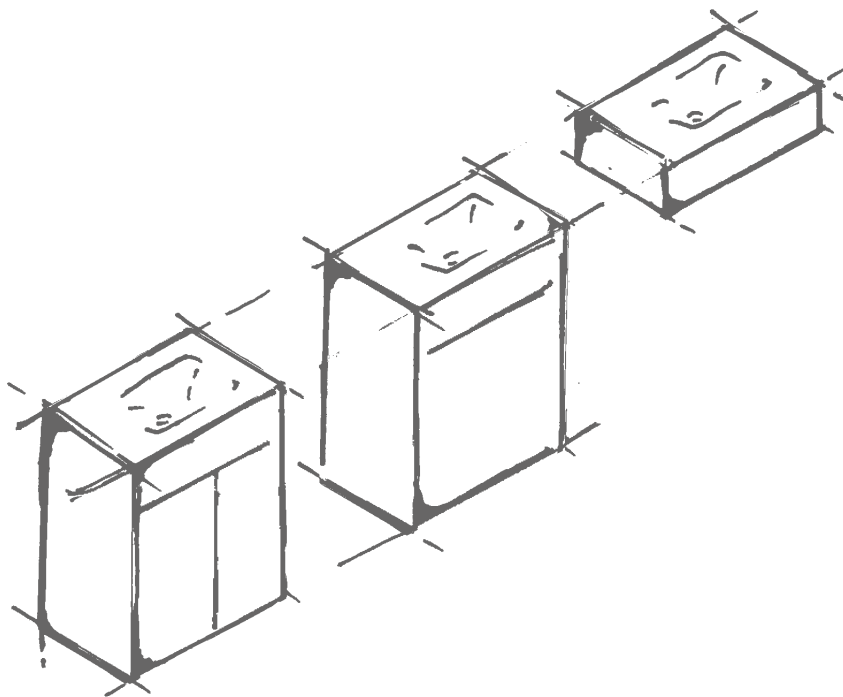


---

Compatto e versatile  
Zen è il "piccolo"  
di casa Artelinea.

Versatile and  
compact Zen is the  
"little" of Artelinea  
Home.

---





**COMPOSITION**  
AL562

**ZEN TOP  
& BASINTOP**  
OPALITE BIANCO 20

**CABINET COVERING**  
ROSSO SILK 92

**MIRROR**  
ZEN COLLECTION





11  
MIRROR  
LESS



Gli specchi Artelinea raccontano la passione,  
la storia, la tecnologia.

The mirrors from Artelinea explain the  
passion, the story and the technology





“Dicono che Efesto fece uno specchio per Dioniso e che il dio, guardandovi dentro e contemplando la propria immagine, si gettò a creare tutta l’umanità”.

“They say that Hephaestus made a mirror for Dionysus and, seeing him in and contemplating his own image, he decided to create the whole of humanity”.

PROCLO



0248  
●●●●

Hand  
made  
in  
Italy





**22** ROSSO  
**92** ROSSO SILK  
**23** MELOGRANO  
**64** MELOGRANO SILK  
**29** CAROTA  
**65** CAROTA SILK

**22** LIMONE  
**66** LIMONE SILK  
**41** NOCE  
**67** NOCE SILK  
**16** TERRA  
**94** TERRA SILK

**43** MOKA  
**76** MOKA SILK  
**45** AVANA  
**05** AVANA SILK  
**33** TORTORA  
**53** TORTORA SILK

**49** SABBIA  
**79** SABBIA SILK  
**30** BIANCO ASSOLUTO  
**70** BIANCO SILK  
**60** SEPPIA  
**93** SEPPIA SILK

**11** FUMO  
**47** FUMO SILK  
**54** GRIGIO  
**07** GRIGIO SILK  
**50** ARGENTO  
**83** ARGENTO SILK

**39** NOTTE  
**99** NOTTE SILK  
**62** OCEANO  
**00** OCEANO SILK  
**26** SARDINIA  
**59** SARDINIA SILK

**63** ERBA  
**44** ERBA SILK  
**15** GLICINE  
**89** GLICINE SILK  
**35** CIPRIA  
**86** CIPRIA SILK

---

Artelinea coniuga la  
tradizione del vetro  
con la freschezza dei  
nuovi colori.

Artelinea mingles  
the tradition of glass  
with new colours to  
create a freshness in  
design.

---

“I colori sono azioni della luce, azioni  
e passioni”.

“Colours are the creation of light  
and passion”.

JOHANN WOLFGANG GOETHE

design **anita brotto**  
photo & stylist **link**  
printing **grafiche antiga spa**

Copyright © 2015 ARTELINEA SpA

ARTELINEA SpA si riserva il diritto di variare, senza alcun preavviso, quanto descritto e fotografato in questo catalogo.

**Tutti i diritti riservati.**

Questa pubblicazione, o parte di essa, non può essere riprodotta senza l'autorizzazione scritta di ARTELINEA SpA.

I pigmenti colorati, così come quelli neutri o trasparenti, reagiscono ai flash, variando l'aspetto cromatico; per questo motivo, gli oggetti pubblicati in questo catalogo, possono presentare lievi differenze cromatiche rispetto alla realtà.

ARTELINEA SpA reserves it self the right to vary, without any warning, the products described and photographed in this catalogue.

**All rights reserved.**

This publication, cannot be reproduced in any part, in any case without the written authorization of ARTELINEA SpA.

The coloured pigments, as well as the neutral and transparent ones, react to the photographic flash, thus varying their chromatic aspect. For this reason the tones of the objects shown in this catalogue may appear slightly different in reality.





# ARTELINEA

FIRENZE 1962

**ARTELINEA S.P.A.**

Via Degli Innocenti, 2  
50063 Figline e Incisa Valdarno  
(FIRENZE) · Italy  
T +39 055 961 961  
F +39 055 96 22 380  
[www.artelinea.it](http://www.artelinea.it)  
[info@artelinea.it](mailto:info@artelinea.it)

**Headquarters:**

Via dell'Industria,1  
Loc. Santa Barbara  
52022 Cavriglia (AR)  
GPS: N43°33'44" E 11°28'09"