

ARTELINEA

FIRENZE 1962

A modern, two-story building with a large glass facade reflecting the sky and surrounding landscape. The building has a concrete upper section and a glass lower section. In the foreground, there are concrete steps leading up to the entrance, flanked by red flowering plants. To the left, three flags are flying on poles: the European Union flag, the Italian flag, and a blue flag with the word 'ARTELINEA' in white. The sky is blue with some clouds.

OUR COMPANY

DESIGN AND INNOVATION SINCE 1962

A modern bathroom interior with a dark wall. On the left, a glass-fronted cabinet holds various items, including a reed diffuser and a box labeled 'TIARE'. In the center, a white rectangular sink is mounted on a dark vanity unit. To the right of the sink, there is a soap dispenser and a bar of soap. Two circular light fixtures are mounted on the wall above the sink. The text 'OUR VISION' is overlaid in the center of the image.

OUR VISION

TO INSPIRE SOLUTIONS WITH OUR DESIGN
AND ENGAGE WITH OUR TECHNOLOGY

OUR MISSION

THINKING, CREATING AND FINDING SOLUTIONS
FOR A SHARED, COLLECTIVE WELL-BEING

An aerial photograph of the Florence Cathedral (Duomo) dome, showing its iconic terracotta tiles and the surrounding dense urban landscape of Florence, Italy. The image is partially obscured by dark, out-of-focus foreground elements, possibly architectural details or foliage, creating a sense of depth and framing the central subject.

MADE IN ITALY

WE PRODUCE BATHROOM FURNISHINGS
IN THE HEART OF TUSCANY



60+

EMPLOYEES



25

PARTNER
COUNTRIES

An abstract geometric composition featuring various materials and colors. The background is a deep blue. In the top left, there's a dark grey area with fine, parallel lines. In the top right, a white surface with yellowish-brown veining is visible. In the bottom right, a light grey area with diagonal lines is shown. A dark blue rectangular shape is positioned in the center, slightly overlapping the other elements.

MATERIALS



DUALITE

TWO DIFFERENT CRYSTALS
IN THE SAME PRODUCT

DAMA





OPALITE

NATURAL, ECO-FRIENDLY,
RESISTANT, VERSATILE

REGOLO



A person wearing blue work gloves is handling a large glass pane in a factory setting. The background shows industrial machinery and structural elements. The text "GLASS" is prominently displayed in the center, with "RECYCLABLE AND ECO-FRIENDLY" below it.

GLASS

RECYCLABLE
AND ECO-FRIENDLY

CAPRI



CORTINA



TAORMINA



ROMA



MILANO



GREEN COMPANY



RECYCLABLE
& ECO-FRIENDLY MATERIALS

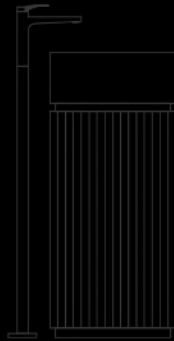
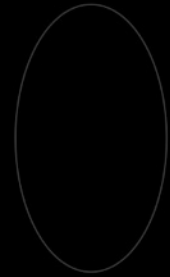
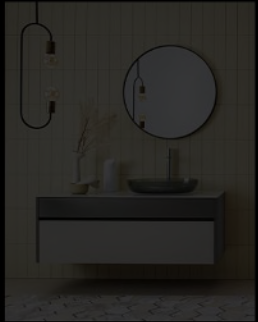
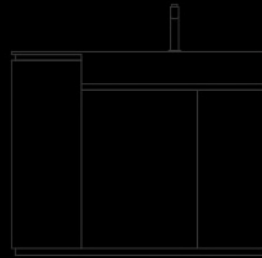
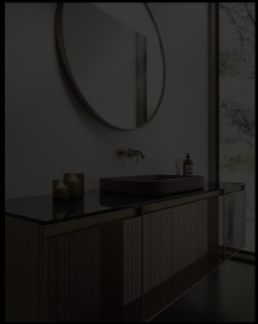


12,000+ M²
PHOTOVOLTAIC PANELS
(80% OF THE COMPANY ENERGY)



100% RECYCLED
PACKAGING

COLLECTIONS



TRISTANO E ISOTTA



MONOLITE



PLISSÈ



VOLUMI



QUADRA



FUSION



ALEXANDER



+SKIN



SOTTOSOPRA



VIRGO



RIGA

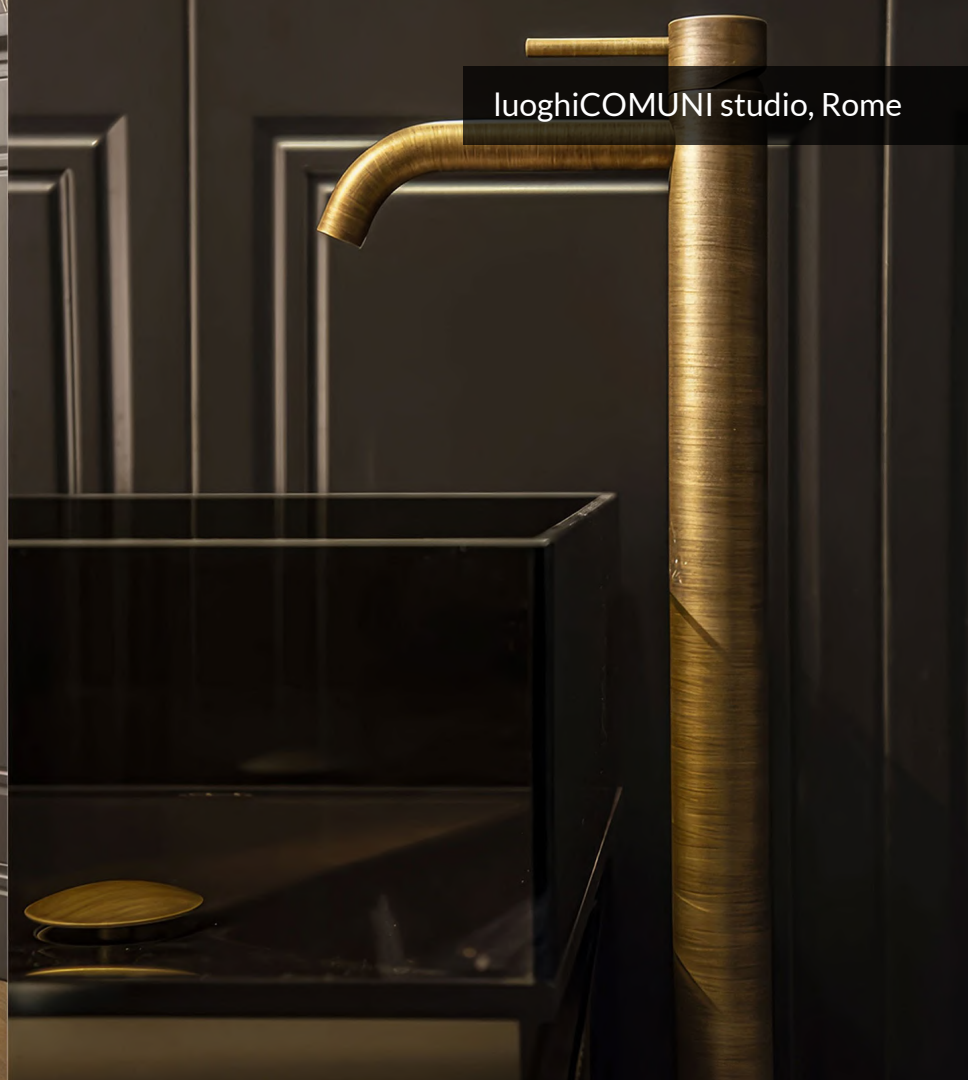


TRAMONTO



A large, two-story classical house with a central pediment and columns. The house is illuminated from within, with warm yellow light glowing from the windows and doors. The exterior is also lit with warm, low-key lighting, highlighting the architectural details like the columns and cornices. The house is set on a dark lawn with some trees in the background. The sky is a deep blue, suggesting dusk or dawn. The overall mood is elegant and sophisticated.

REFERENCES



luoghiCOMUNI studio, Rome





ARTELINEA

FIRENZE 1962

CONTACTS:

Tel. +39 055 961961
info@artelinea.it

Via dell'Industria 1, Loc. Santa Barbara
52022 Cavriglia (AR), Italy

www.artelinea.it